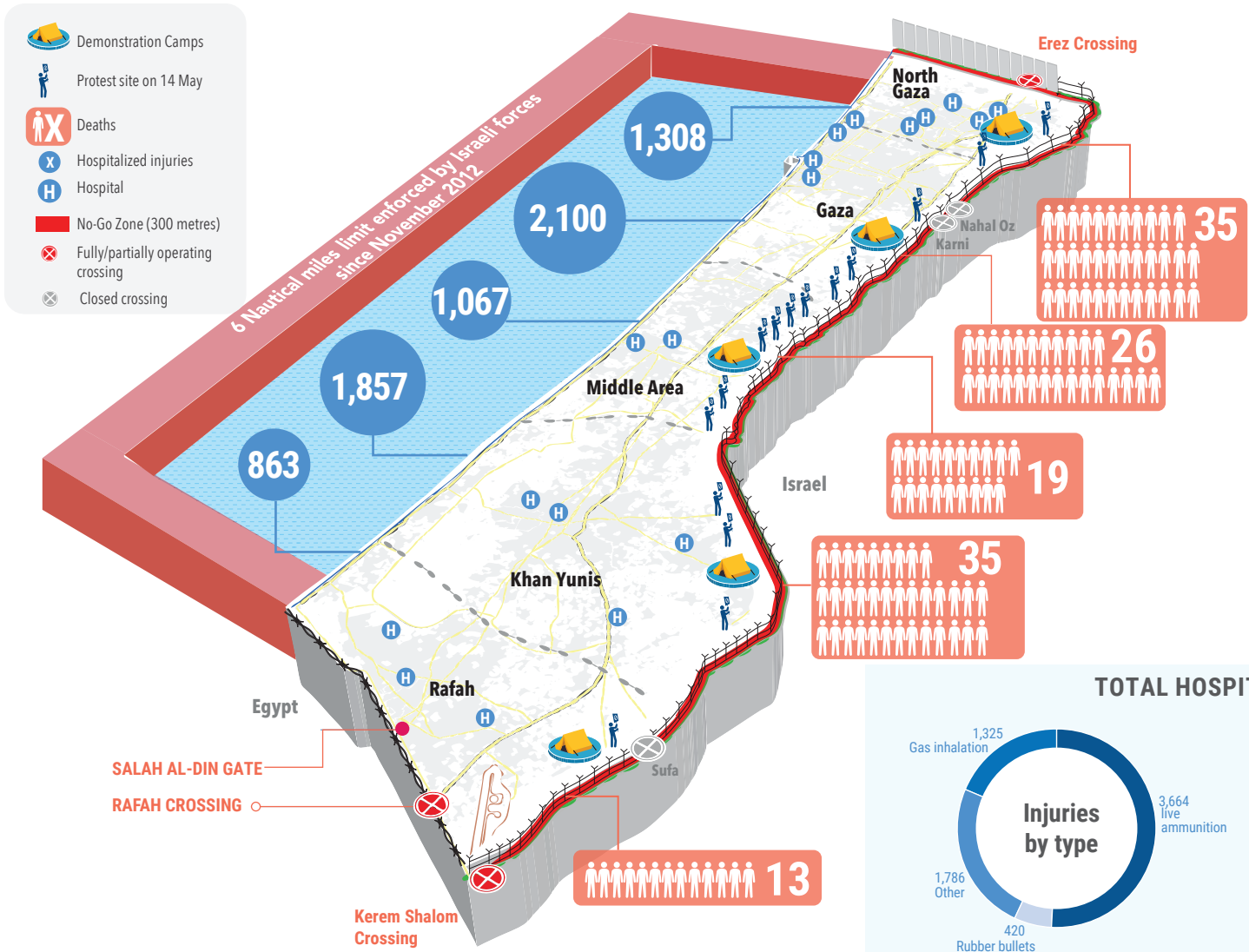


OVERVIEW

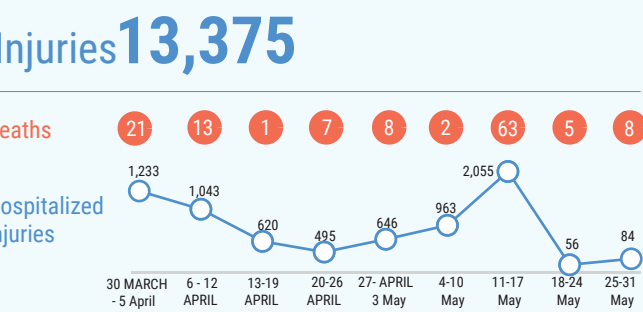
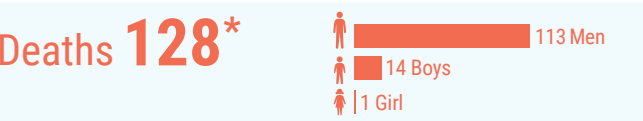
Since 30 March 2018, the Gaza Strip has witnessed an enormous increase in Palestinian casualties in the context of mass demonstrations taking place along Israel's perimeter fence with Gaza. The demonstrations have occurred as part of the 'Great March of Return', a series of mass protests, expected to continue up to 5 June. The large number of casualties among unarmed Palestinian demonstrators, including a high percentage of demonstrators hit by live ammunition, has raised concerns about excessive use of force by Israeli troops. Gaza's health sector is struggling to cope with the mass influx of casualties, due to years of blockade, internal divide and a chronic energy crisis, which have left essential services in Gaza barely able to function.



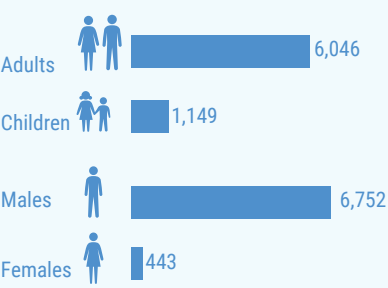
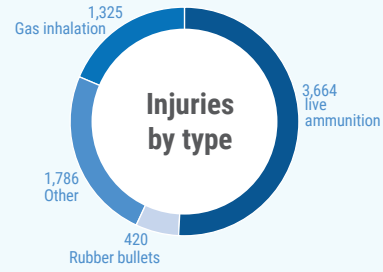
KEY HUMANITARIAN NEEDS

- Rapid deployment of quality-assured emergency medical teams to conduct complex lifesaving surgery.
- Procurement of essential drugs, disposables and medical equipment to ensure accurate diagnostics and treatment of the injured.
- Increase in the number and presence of civil society partners to document possible human rights violations.
- Legal aid to address restrictions impeding medical patients from receiving treatment outside Gaza.
- Mental health and psychological support for children and families impacted by violence.
- Access to critical medical cases to treatment outside Gaza.

TOTAL PALESTINIAN CASUALTIES 30 MARCH-31 MAY



TOTAL HOSPITALIZED INJURIES 7,195**



Source of casualty data: Palestinian Ministry of Health in Gaza
Data as of 31 May 2018

** This figure includes 17 Palestinians (two of them children) killed in unclear circumstances during the 14 May demonstrations, as well as 16 Palestinians (including one child) killed since 30 March in contexts other than demonstrations; among the latter are five people whose bodies are being reportedly withheld by the Israeli authorities.
**Additional 6,180 were treated in field medical trauma stabilization points.

Disclaimer: Data and analysis provided in this snapshot is based on preliminary information available. Further assessments are pending.